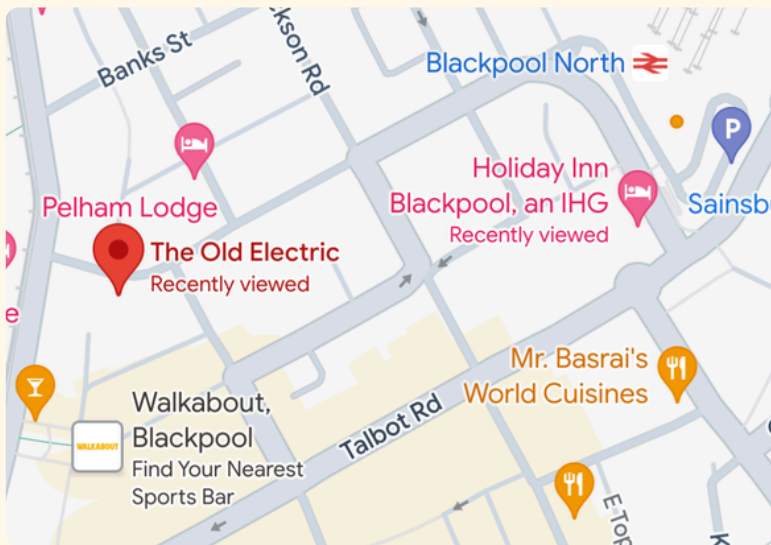




Easy Read Guide for The Old Electric General Access



Springfield Rd,
Blackpool
FY1 1QW,
United Kingdom

[Google Maps link](#)



The outside of the
building looks like
this.

There will be staff
available to walk
you from the hotel.

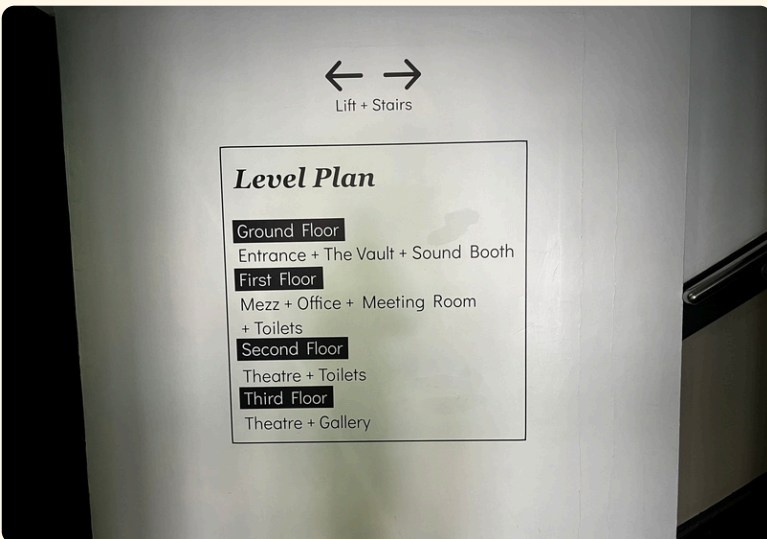
Please let us know
if you would like a
buddy to walk with.

Directions - Parking

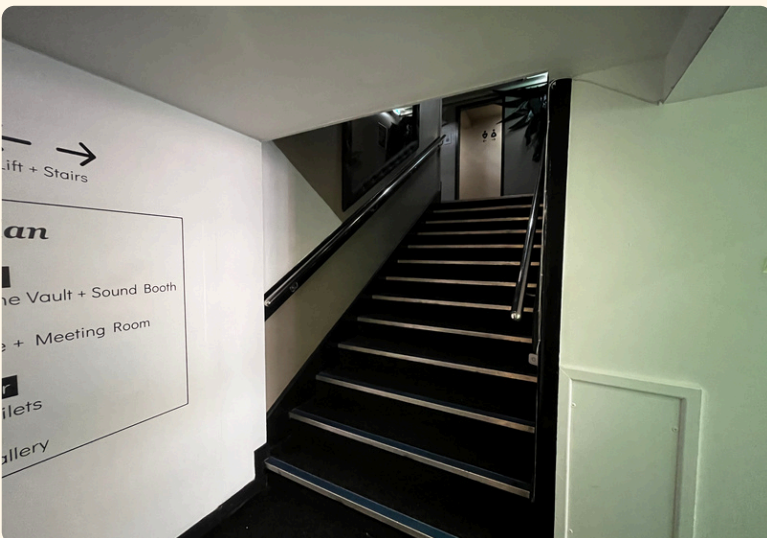


The entrance looks like this.

There will be a member of staff here to meet you and check you in.



There is a level plan on the wall in front of you.



Stairs are to the right.

First Floor - Mezz



Toilets are at the top of the stairs.



Turn left and go through the door.



Through the door to the right is the Mezz area.

It looks like this.

The coloured lights will be turned off.

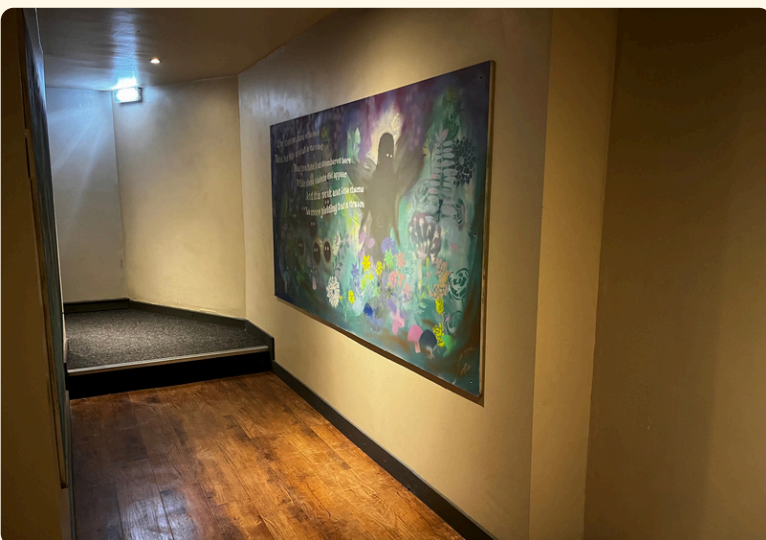
To the lift



Here is the door to go to the theatre space.



Go through the doors.



Follow the corridor.

Second Floor - Theatre



Go up the stairs.



To this hall.

To the left is the entrance to the theatre.

To the right down the corridor are more toilets.



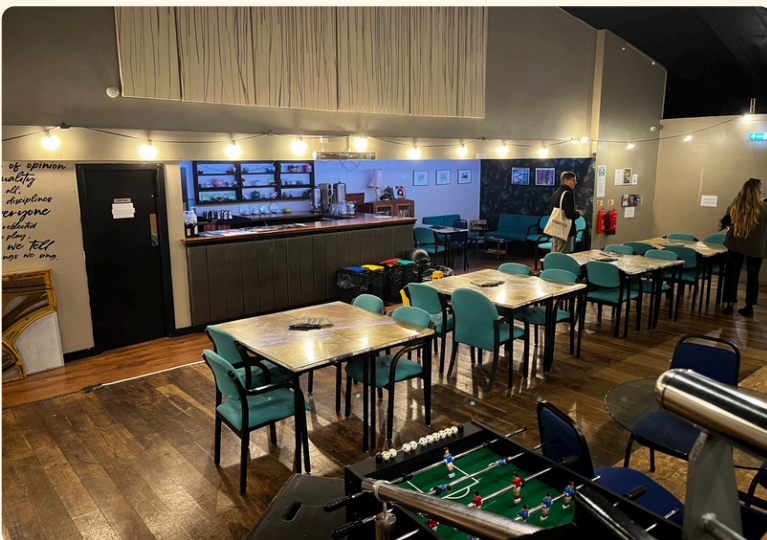
This is the main space. You will enter from the left of this photo.

Third Floor - Gallery



This is the theatre from the other direction. The Gallery is at the top behind the seats.

There are stairs on the left and right to get there.



This is the Gallery space.

It overlooks the Theatre.



We will have Lunch here.

First Floor - Quiet Space



The quiet space is in here.



Go through the door.
You will be in an office.
Turn right to find the door to the quiet space.



The quiet space looks like this.

The furniture will be different.

There will be a smaller table, rugs, chairs and beanbags.